



MINISTÉRIO DA CIÊNCIA E TECNOLOGIA
INSTITUTO NACIONAL DE PESQUISAS ESPACIAIS

The Test Bench with Altitude Simulation

200 N Bipropellant Thrusters



Specially designed and built to attend the needs of the Brazilian Space Program, INPE's Test Bench with Altitude Simulation, in Cachoeira Paulista, Brazil, is one of the most sophisticated instruments in the qualification of satellite thrusters, with its convenient eight cubic meters chamber.



Main Features

Bipropellant thrusters, from 5 to 200 N

For 200 N: 3 mbar, up to 1500 s (straight)
Maximum test duration : 4 hours
Propellant : MMH and N_2O_4

Monopropellant thrusters, from 2 to 150 N

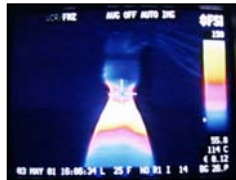
For 150 N: 5 mbar, up to 1500 s (straight)
Maximum test duration: 4 hours
Propellant: Hydrazine

Vacuum chamber

Stainless steel, 8.5 m³, Pyrex and quartz ports for visualization.

Data acquisition subsystem

46 channels, up to 9 to monopropellant thrusters and 37 to bipropellant thrusters.



*Banco de Testes com Simulação de Altitude -INPE/LCP/BTSA
Rodovia Pres. Dutra, km 40
12630-000 - Cachoeira Paulista - SP – Brasil
Fax : 55 12 561 1992
btsa@lcp.inpe.br*